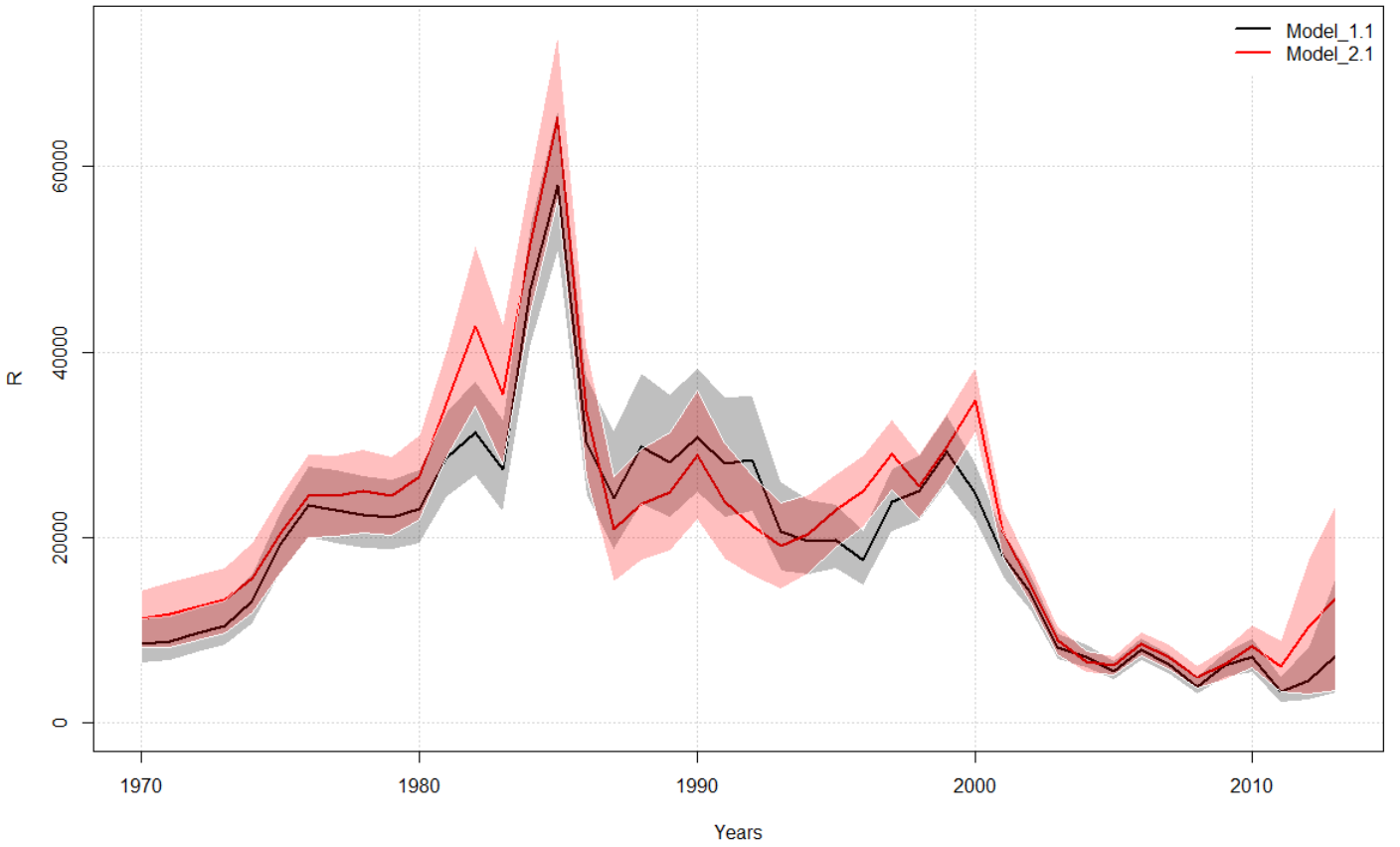
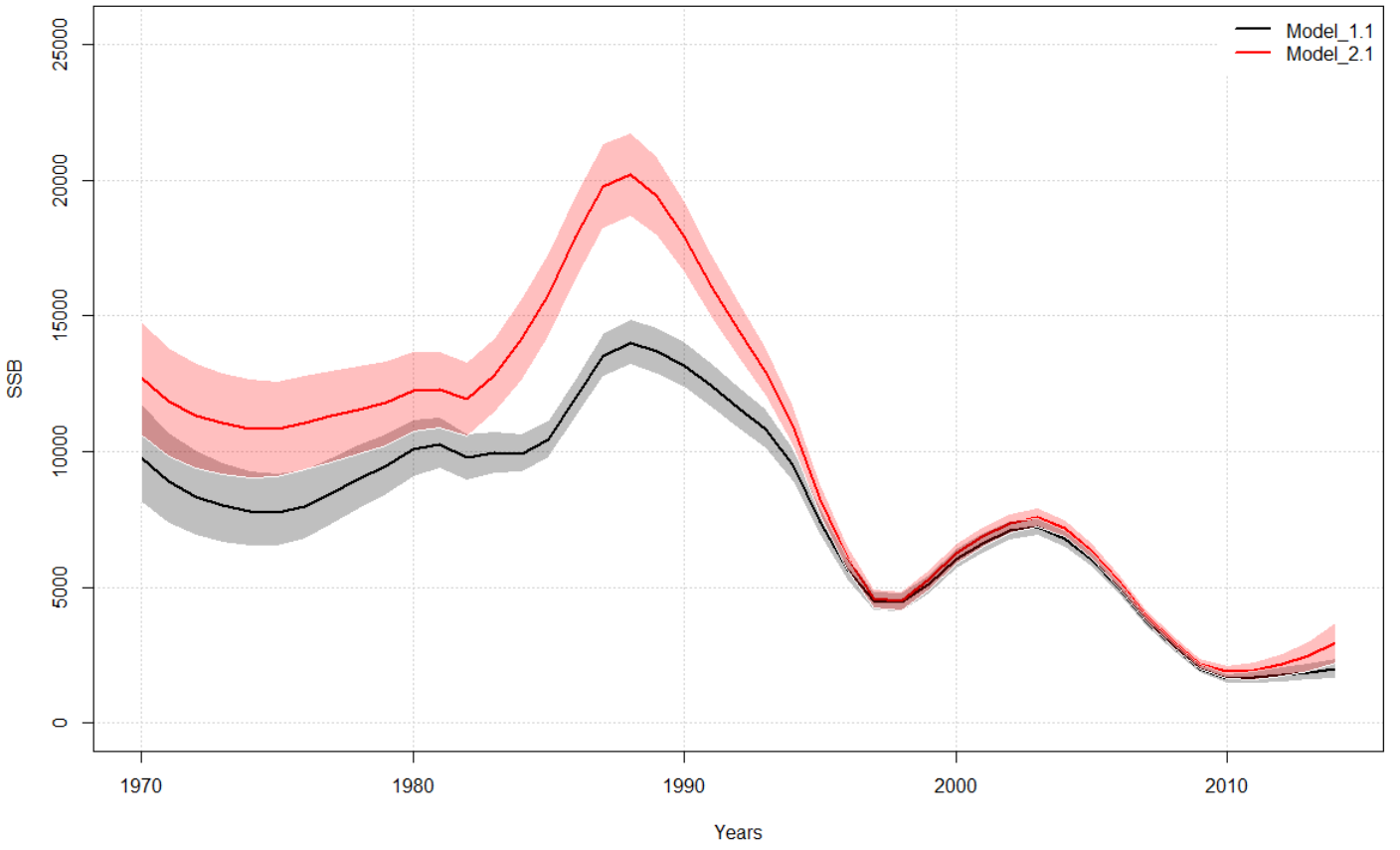
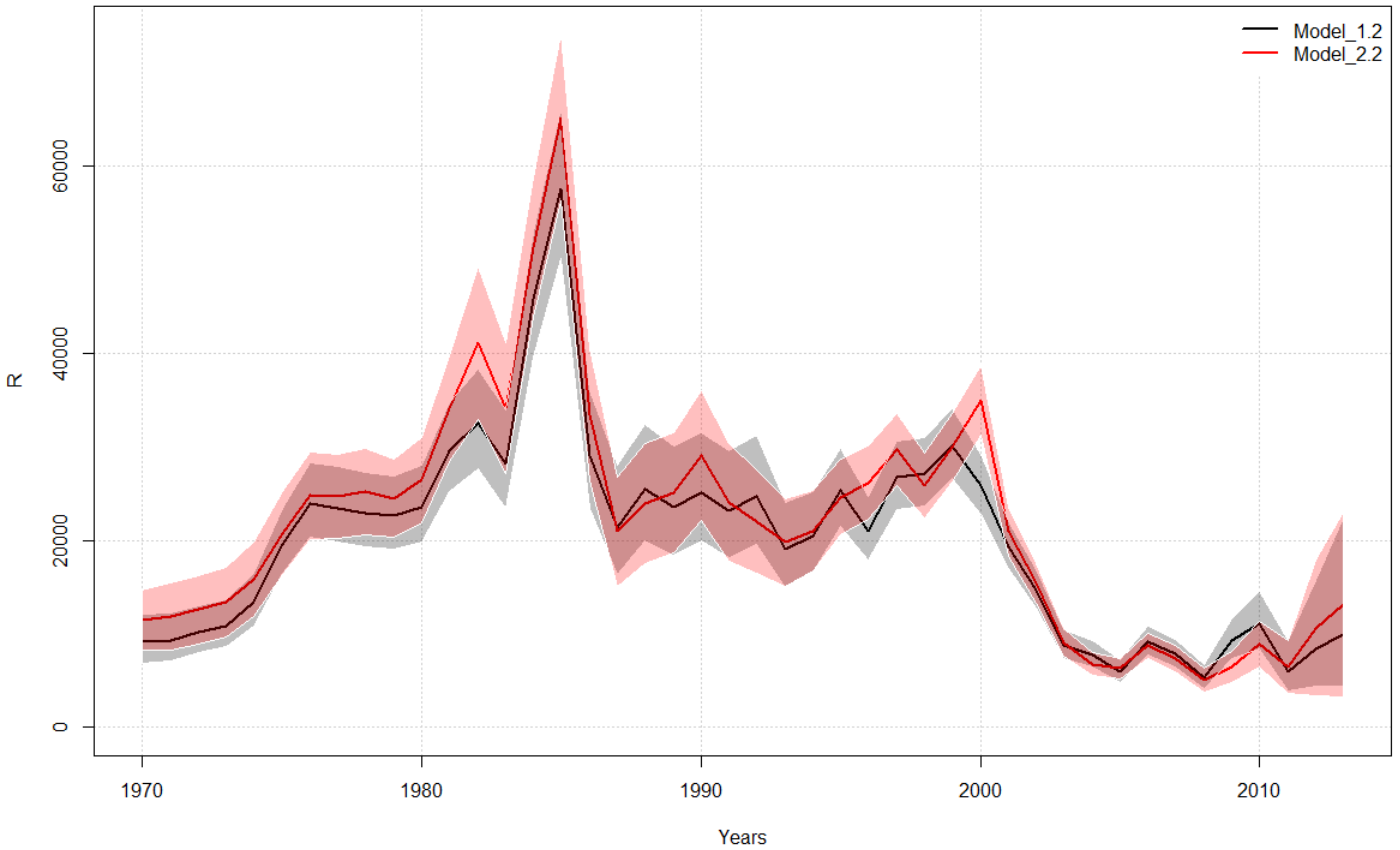
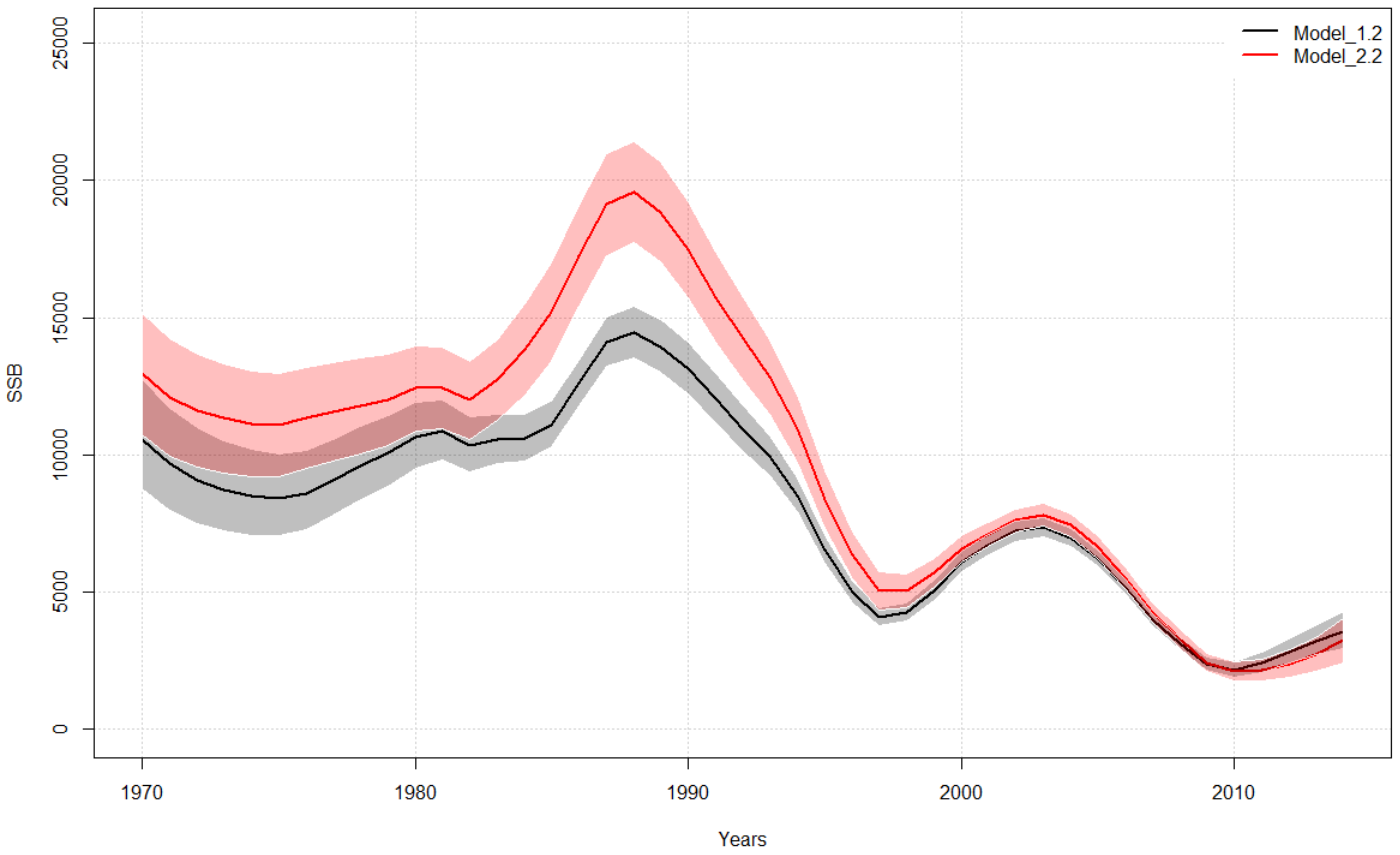


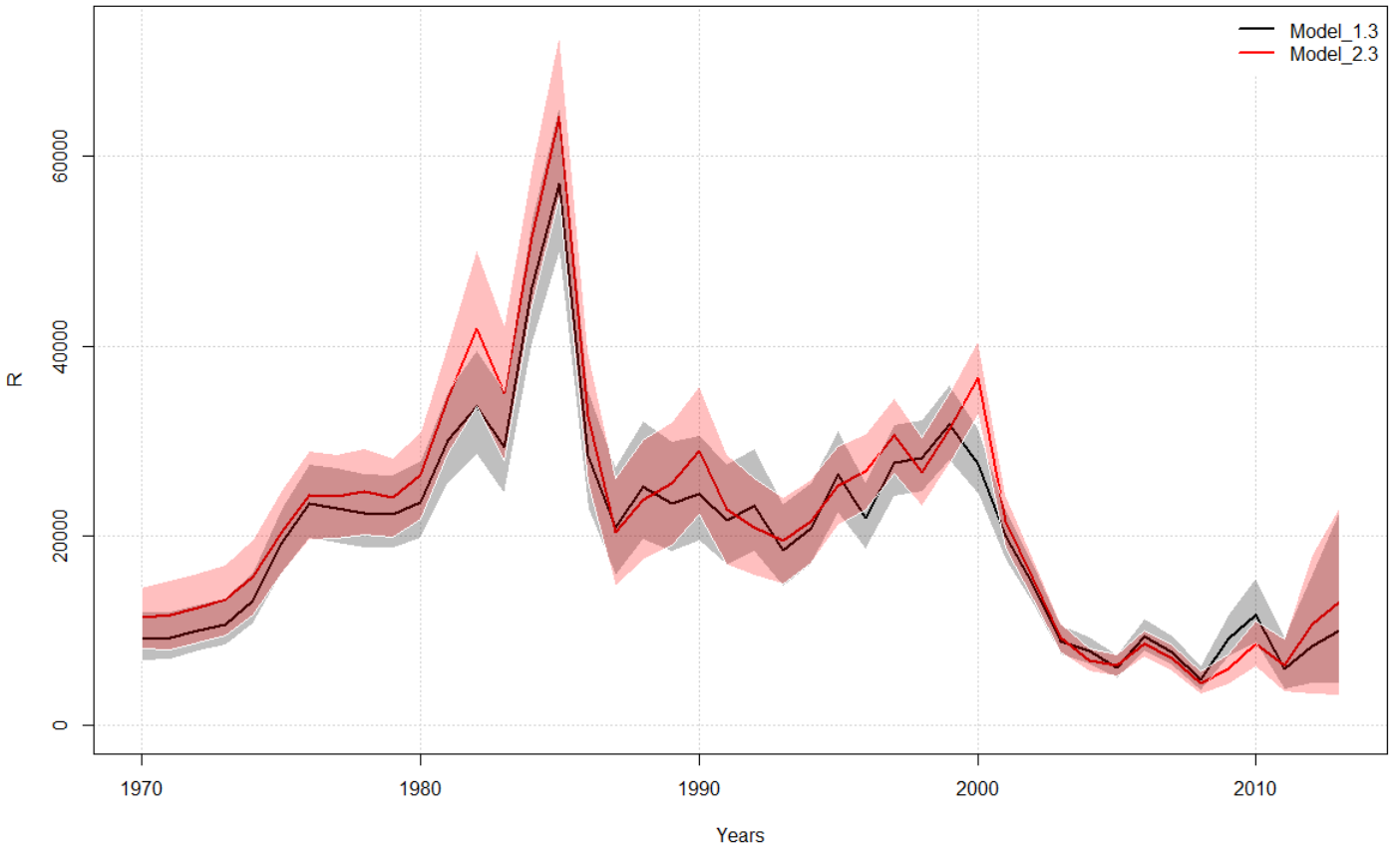
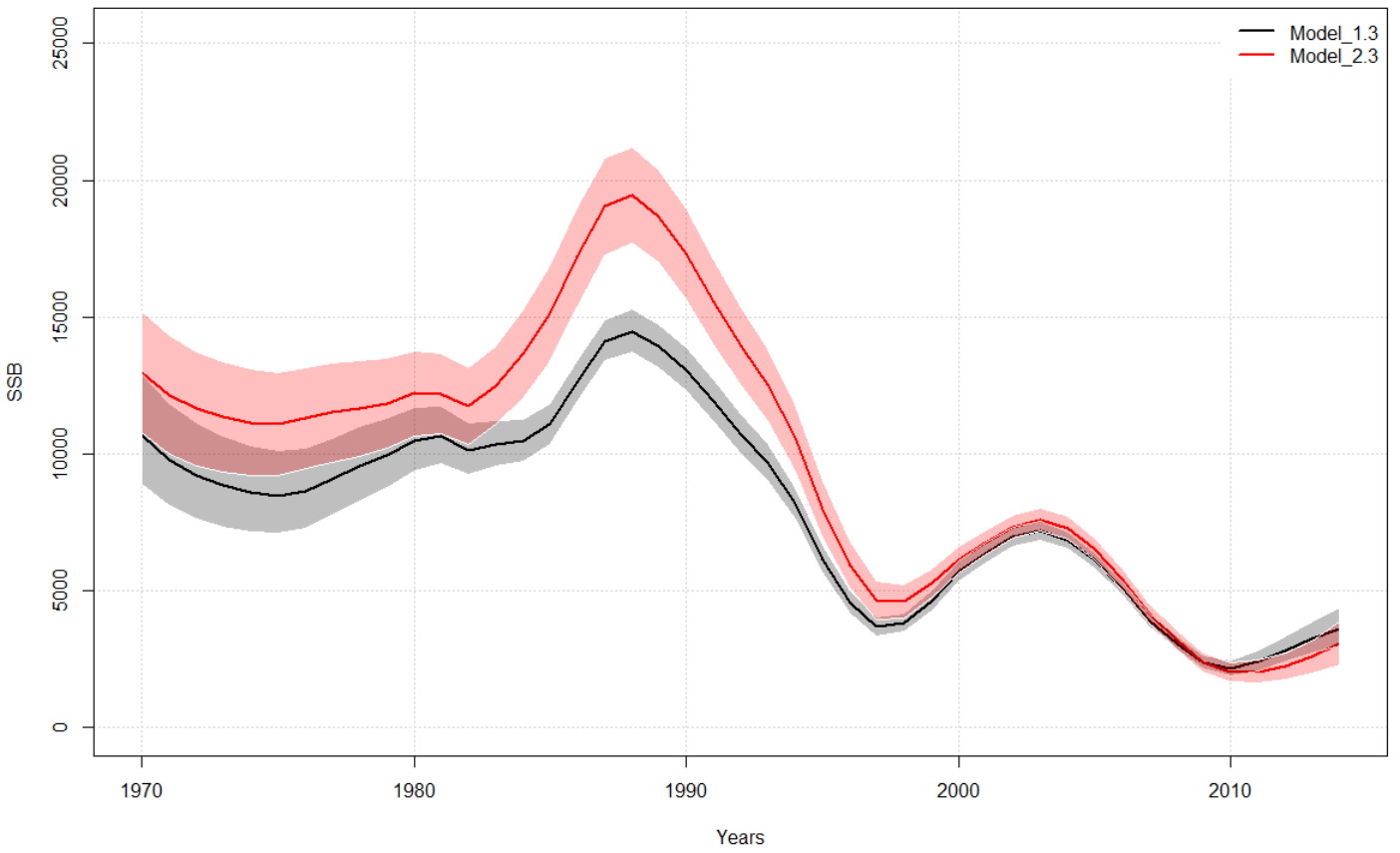
# Model 1.1 vs 2.1



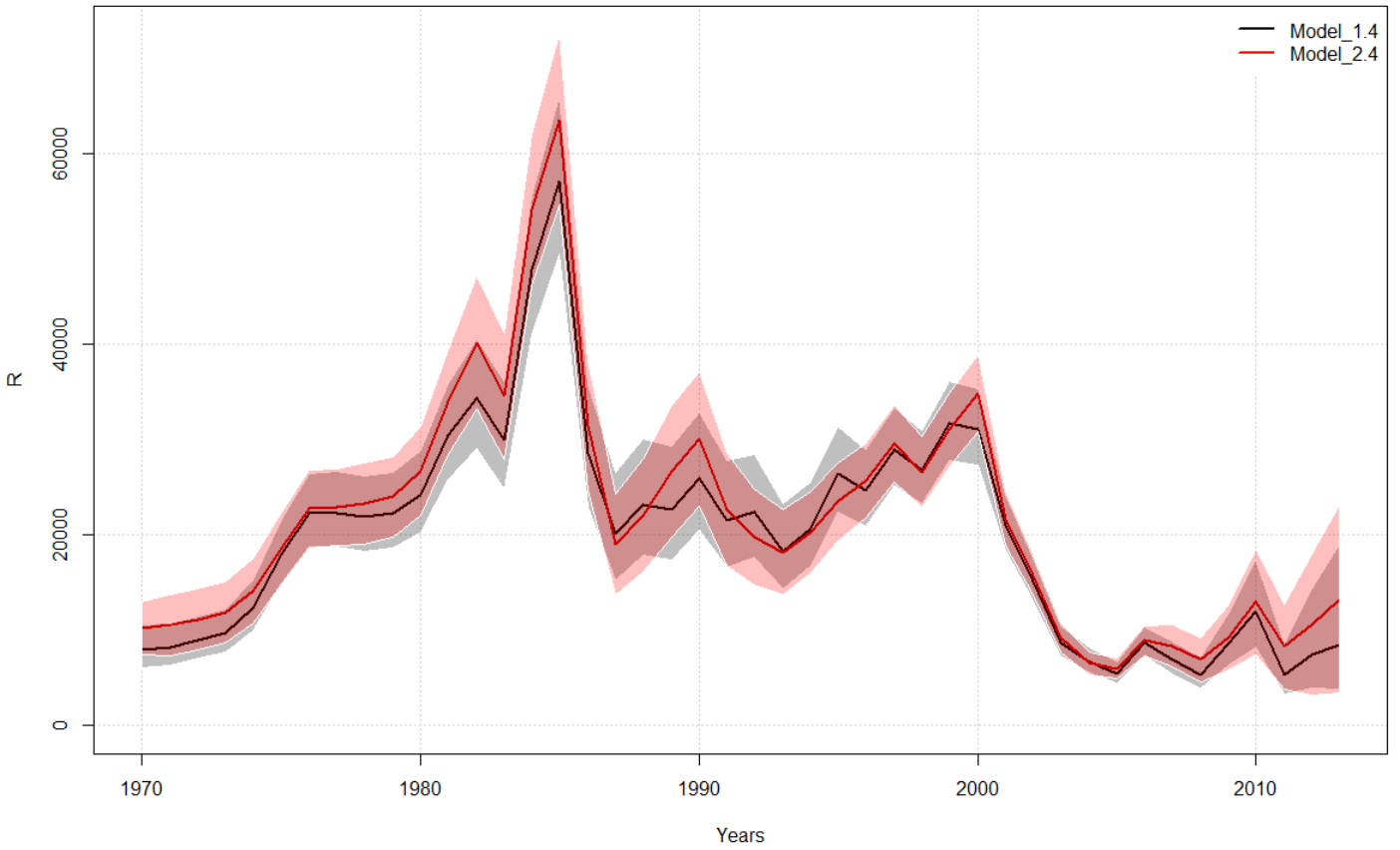
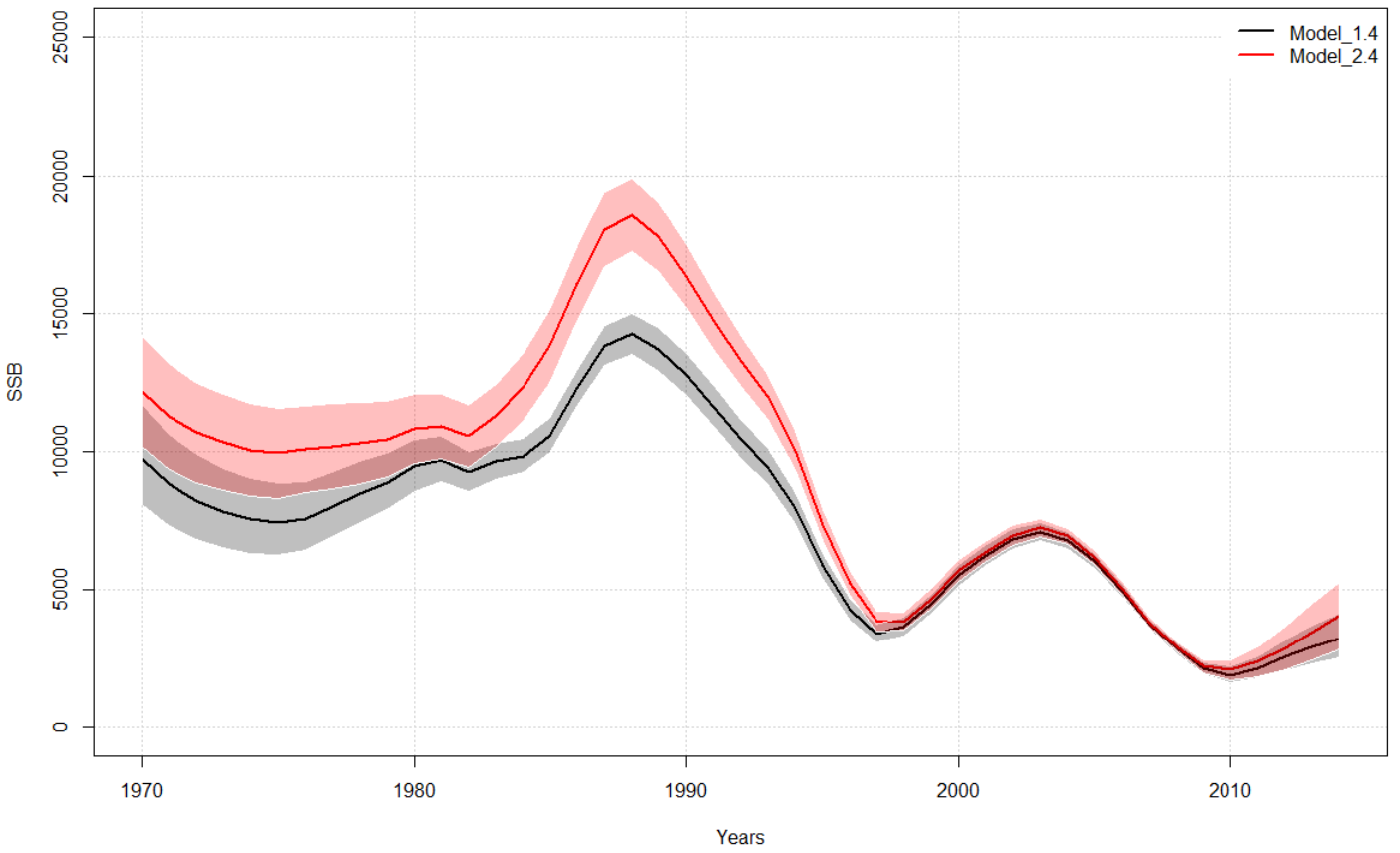
# Model 1.2 vs 2.2



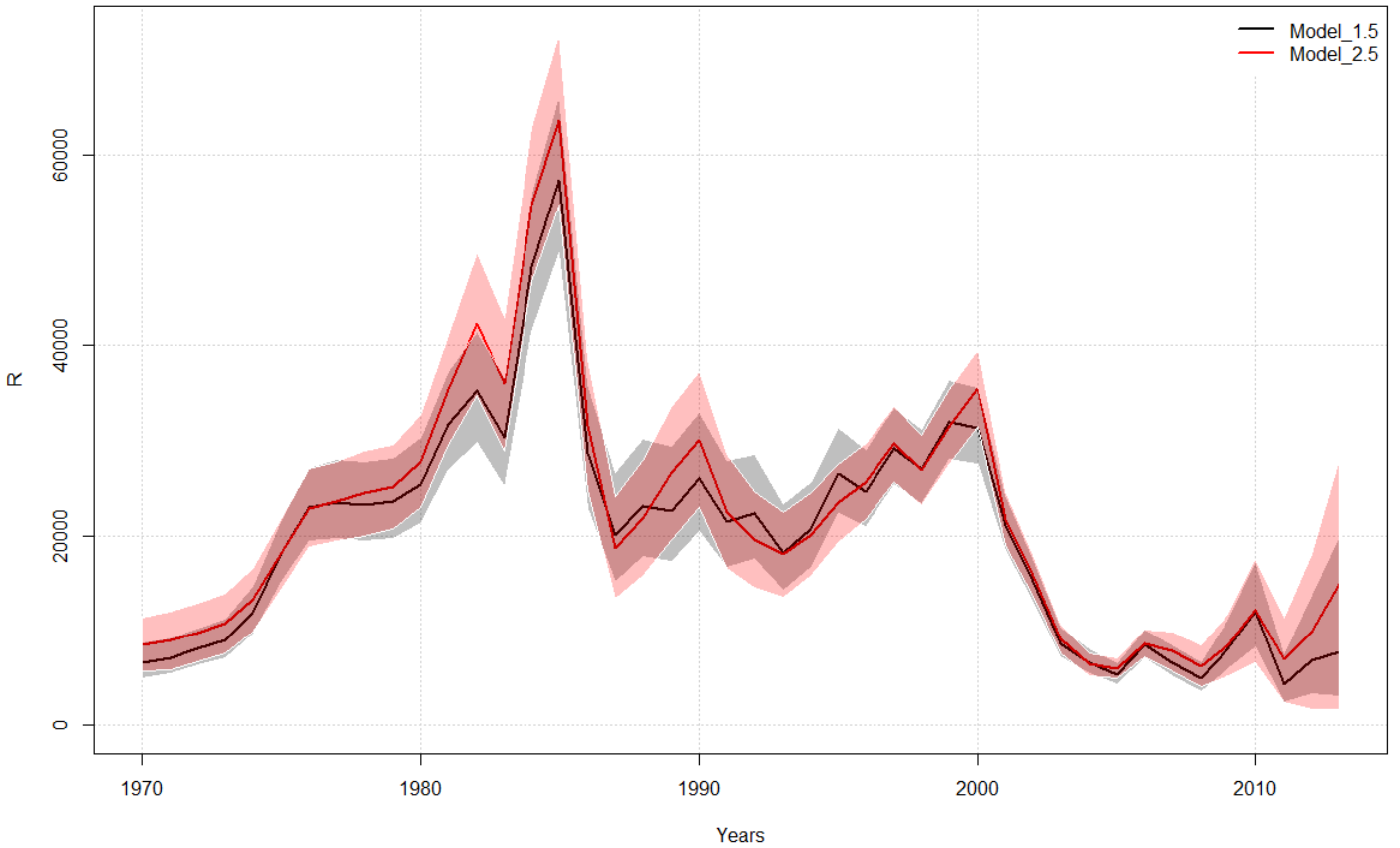
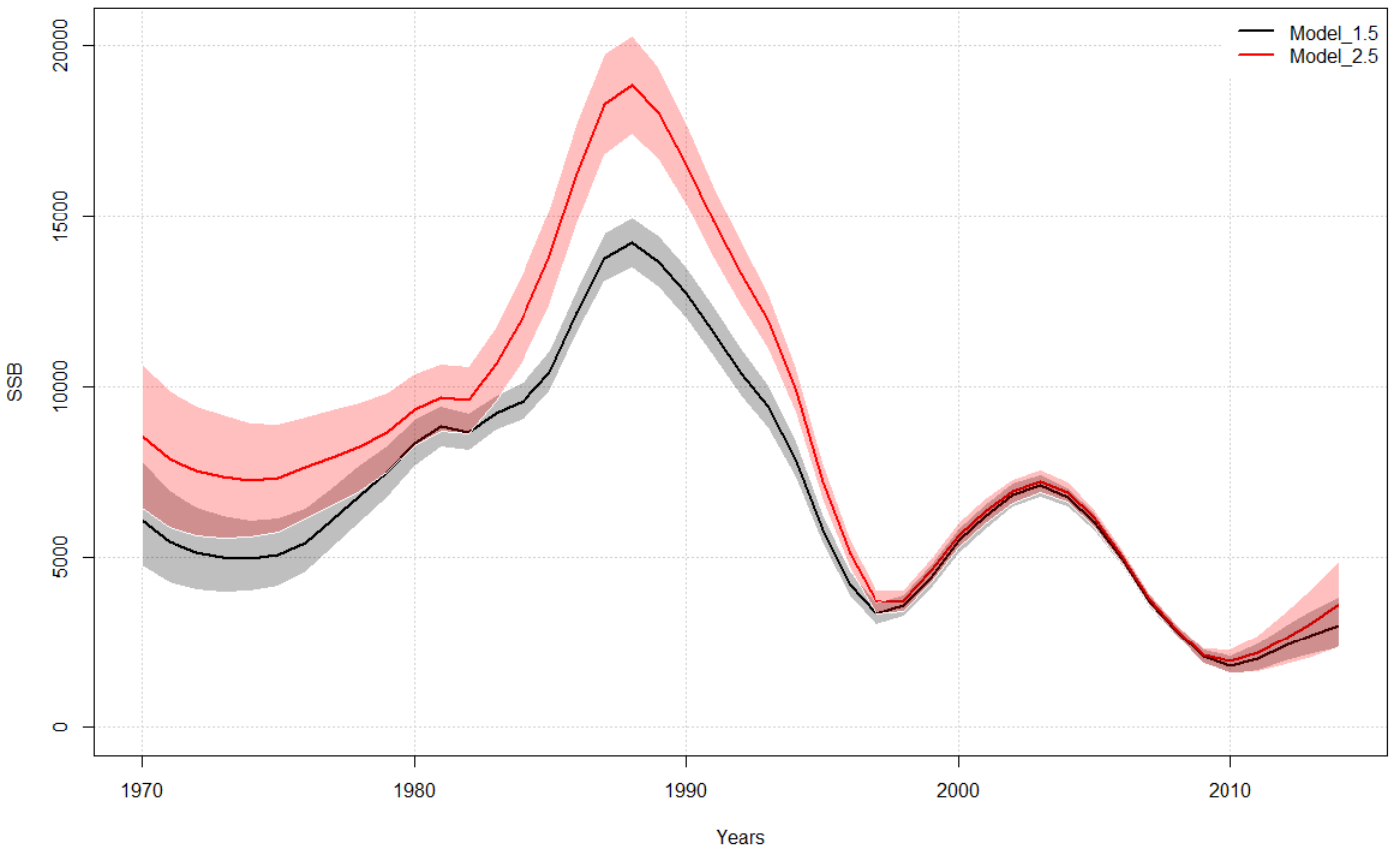
# Model 1.3 vs 2.3



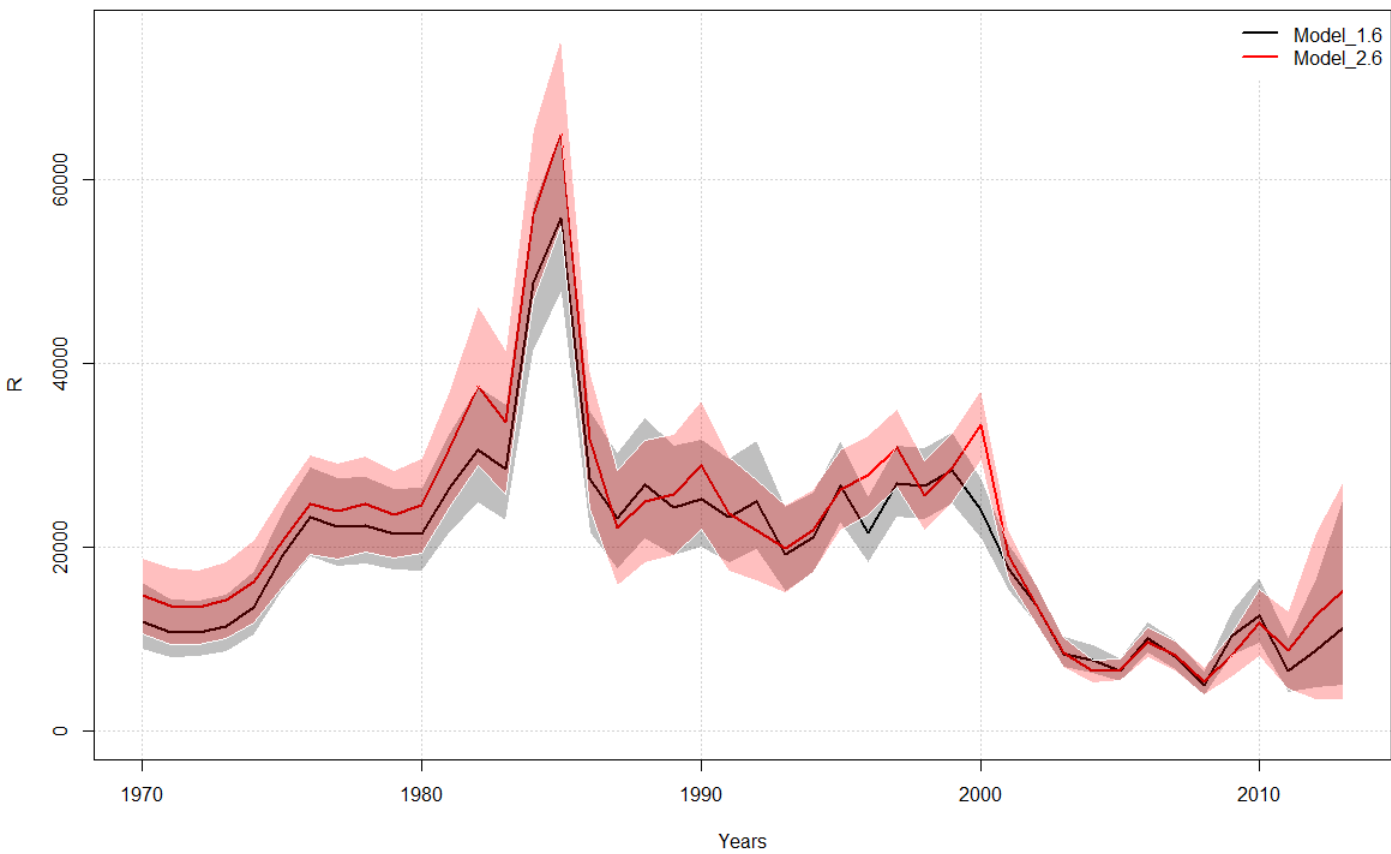
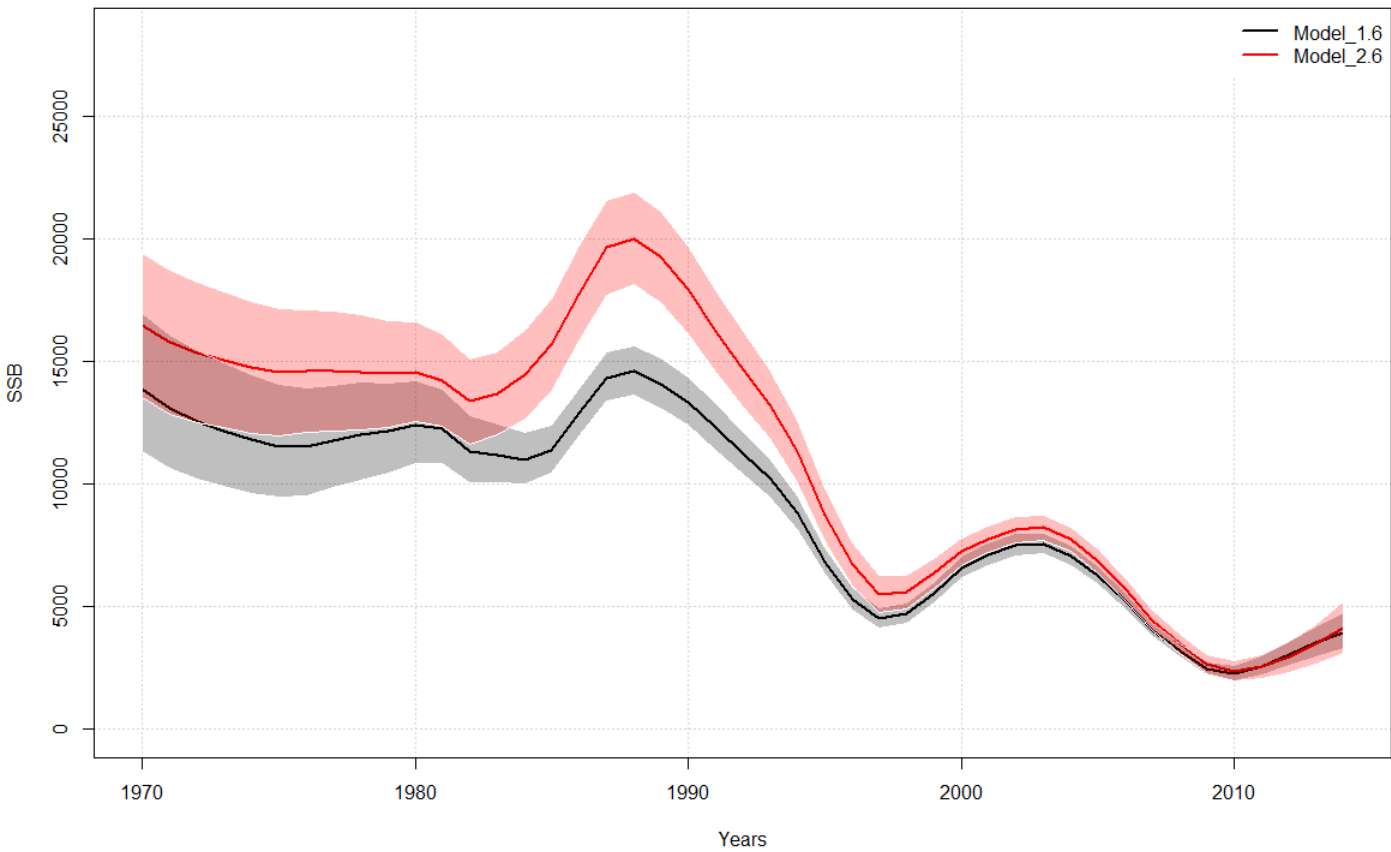
# Model 1.4 vs 2.4



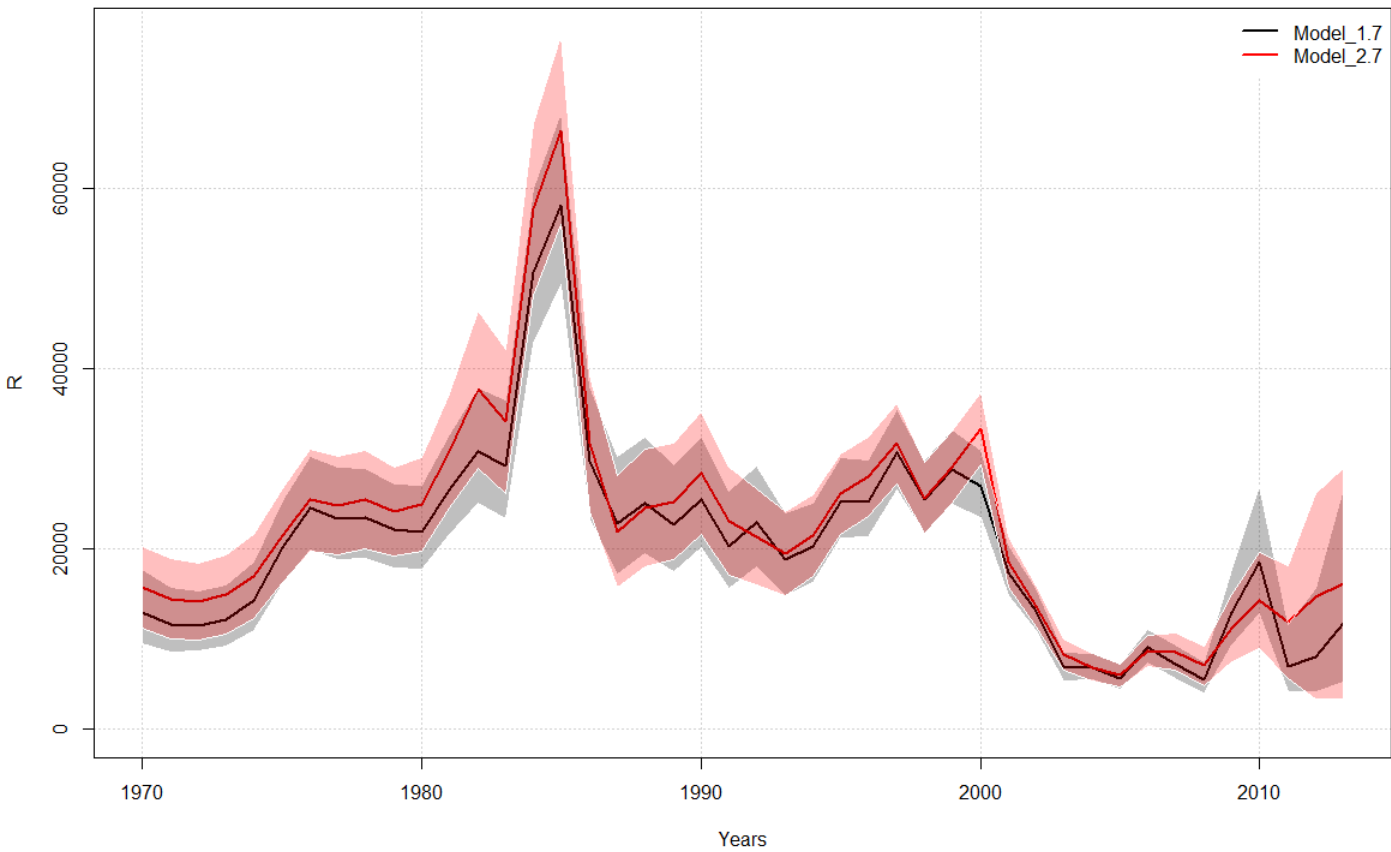
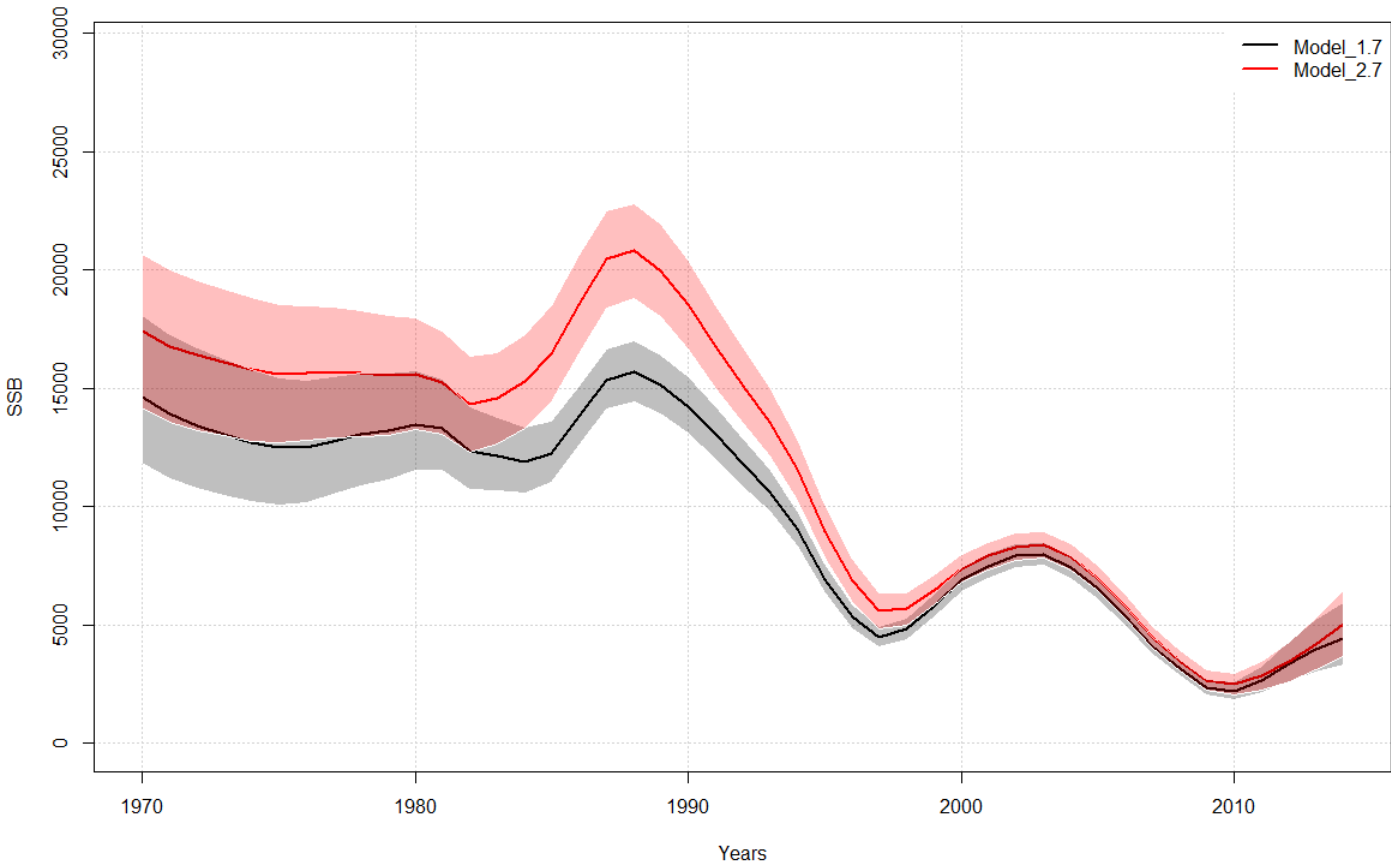
# Model 1.5 vs 2.5



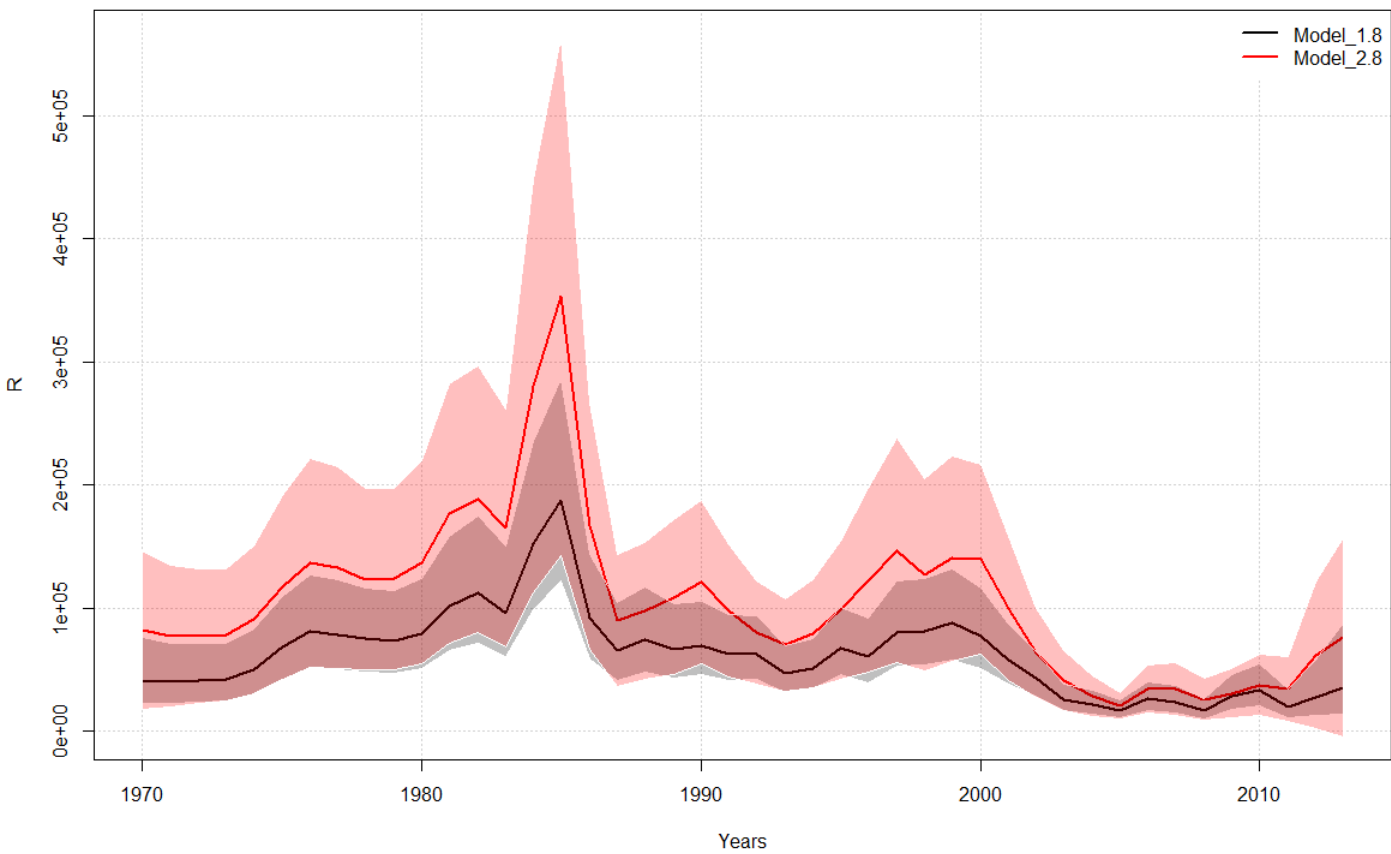
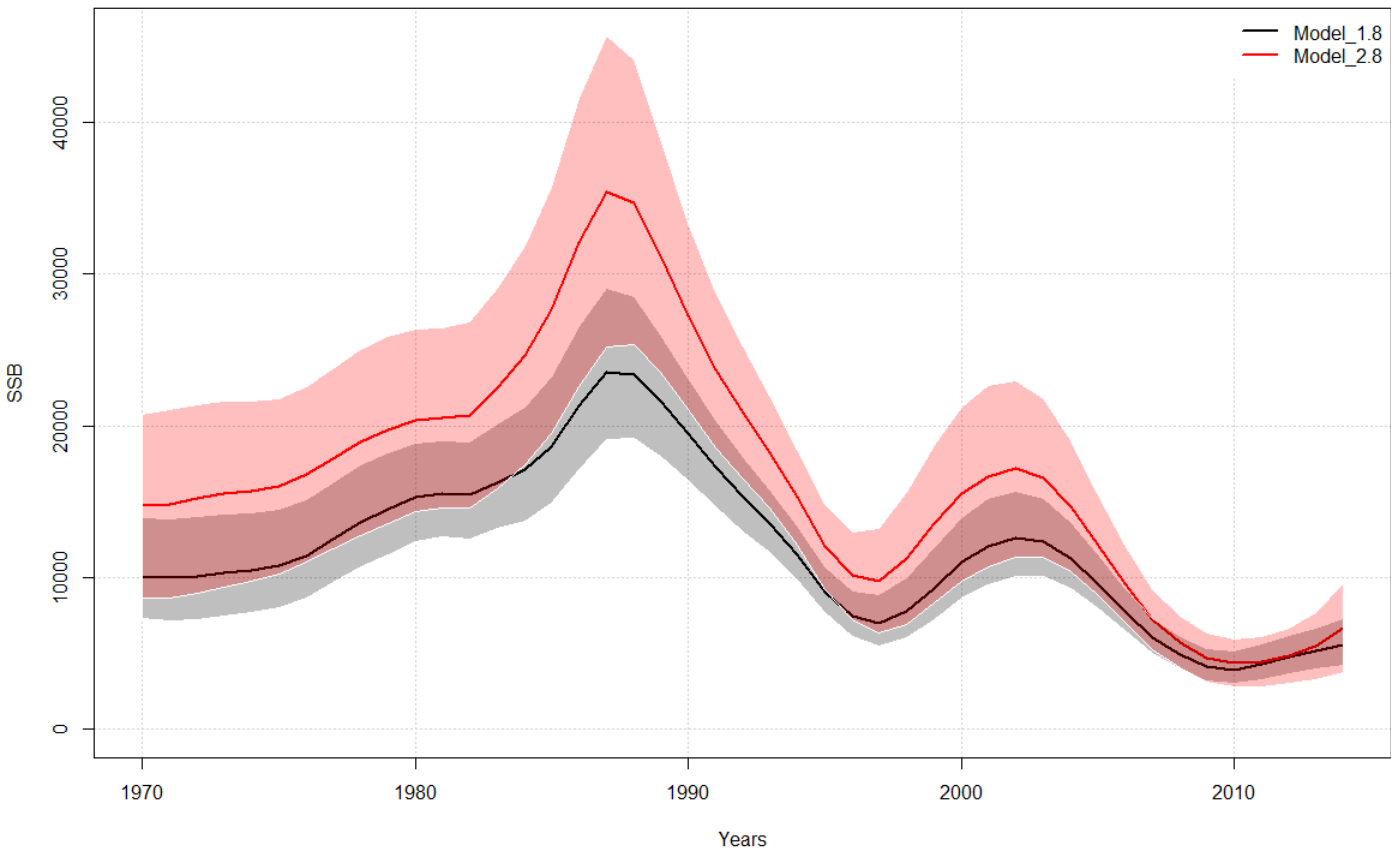
# Model 1.6 vs 2.6



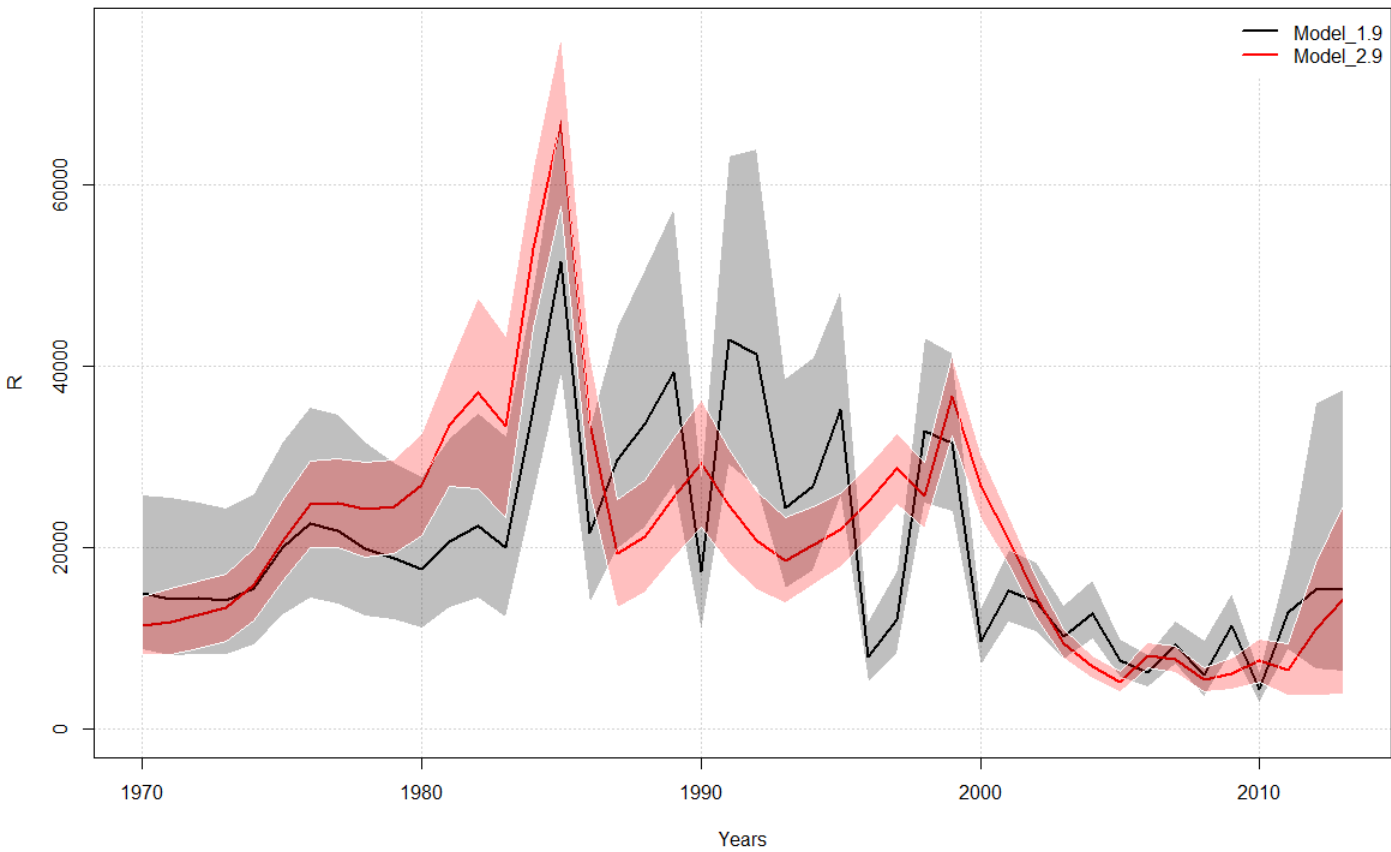
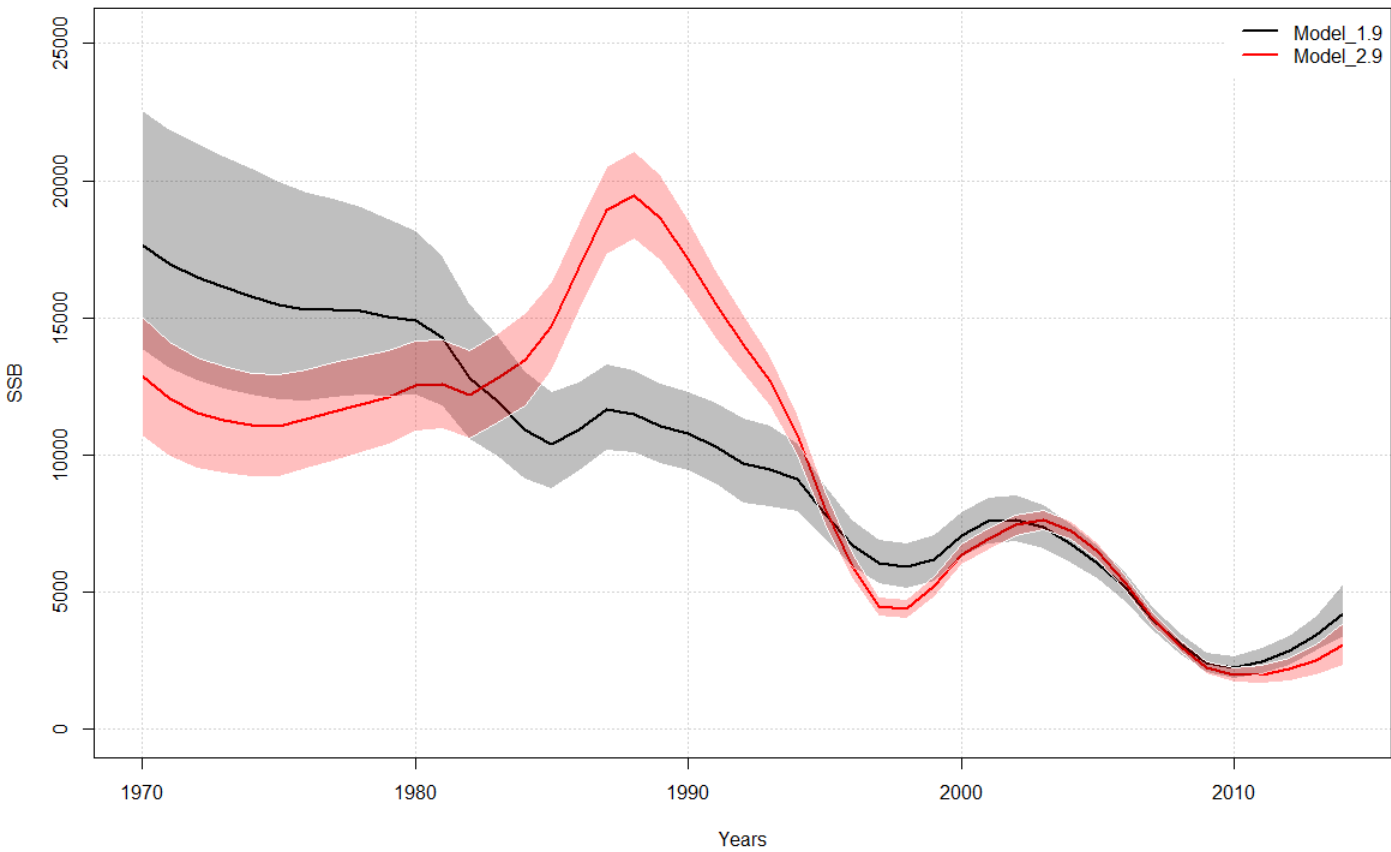
# Model 1.7 vs 2.7



# Model 1.8 vs 2.8



# Model 1.9 vs 2.9



## Likelihoods table

	catch like	age like fsh	length like fsh	sel like fsh	ind like	age like ind	sel like ind	rec like	post priors	total
Model 1.1	2	631	535	74	687	233	24	31	0	2217
Model 2.1	7	583	417	84	359	221	22	53	0	1745
Model 1.2	4	612	527	71	405	224	24	16	0	1884
Model 2.2	5	583	400	84	362	221	22	41	0	1732
Model 1.3	2	517	524	101	372	218	23	16	0	1774
Model 2.3	2	496	400	111	328	215	21	42	0	1629
Model 1.4	1	381	422	271	294	184	22	25	0	1602
Model 2.4	3	368	424	255	270	188	21	48	0	1597
Model 1.5	1	362	421	267	293	183	22	51	0	1602
Model 2.5	3	349	417	251	261	187	21	94	0	1602
Model 1.6	3	431	522	65	384	227	25	1	0	1660
Model 2.6	4	408	400	78	342	225	23	22	0	1516
Model 1.7	3	411	507	66	134	113	20	1	0	1257
Model 2.7	4	391	400	79	290	113	19	19	0	1328
Model 1.8	2	574	531	67	400	227	25	-1	16	1842
Model 2.8	4	542	405	79	321	225	24	31	28	1679
Model 1.9	1	119	62	34	230	43	4	-4	0	489
Model 2.9	6	583	59	73	324	221	22	24	0	1327